



HYTECH EDU. EQUIP. PVT. LTD

CNC MILL TRAINER

MODEL : CUT-MILL-250

- TIE UP WITH “CUTVIEWER”- TUDOR, UK

- 22 COUNTRIES- SATISFIED WITH “CUTVIEWER”
- ONLINE WINDOW BASED 3D SOFTWARE
- DETAIL MANUAL WITH QUESTION BANK
- TRAINED STUDENT WORKS ON INDUSTRIAL M/C SAME DAY
- SIEMENS, FANUC, ISO CONTROL CODES



SPINDLE

- Spindle Speed : Continuous Variable Speed
- Spindle Power : 1.5 HP
- Inside Taper : ISO 30
- Speed Range : 300 to 3000 rpm

AXES TRAVEL

- Longitudinal traverse : 250 mm
- Cross traverse : 150 mm
- Vertical traverse : 200 mm

CONTROLLER

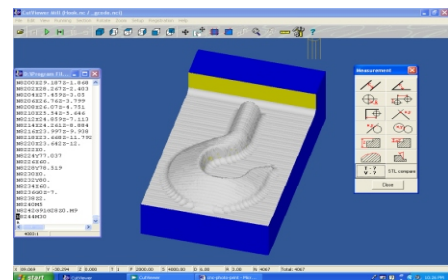
- Type of Control System : PC based system.
- Main Spindle Drive : D.C. Thyristor Drive, Inbuilt Safety.
- X ,Y and Z axis drive : Stepper Motor Drive Servo Drive Optional
- Input to Stepper Motor Drive : Optically Isolated, TTL compatible.
- Run speed control : Computer Control with Software.
- Interpolation : Linear, Circular, Parabolic interpolation.
- Code Used : G,M,S,T, F, I,J, K, M, F
- Cycles : Circular Interpolation, Mirror, Pocket Milling Cycle.
- Pocket & Helical Milling : Provided
- Real Time Tool Path simulation : Provided

TABLE

- Length X Width : 600 X 225 (approx.)
- Clamping Area : 450 X 160 (approx.)
- T Slots : 10 mm slot width.

MACHINE PARAMETER

- Resolution : 5 micron (Standard), 2.5/1.25/1.0 micron
- Distance From Spindle : 25 - 225 mm (Nose to Table Top)
- Centerline to Column : 170 mm
- Spindle Center : 120 - 320 mm (Horizontal to Table)



- KEY FOR ADVANCED AND LATEST CAD-CAM TECHNOLOGY !

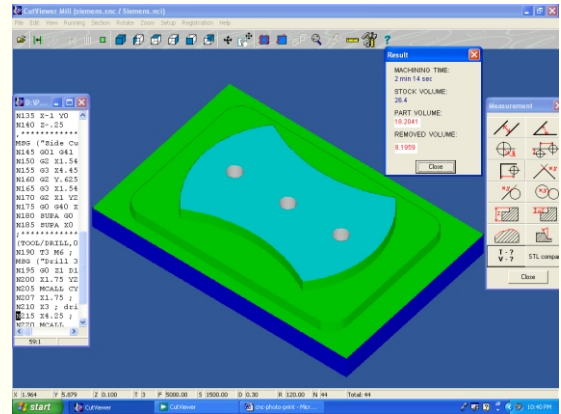
Due to continuous Research & Development specifications may change without notice.

SALIENT FEATURE OF CNC LATHE TRAINER

- Sturdy & Rigid Mechanical Design with Finite Element Analysis.
- Imported Ground Precision **Ball Screw**
- Variable Speed DC drive for spindle
- Eight station Automatic Tool Indexing arrangement with Hydraulic Powerpack (optional).
- Constant surface cutting speed is possible.
- Geometrical tolerances are maintained as per IS 6040-1993 Standard.
- Wear resistant **Turcite Material** is provided on beds.
- Automatic Lubrication system (optional).
- Parabola, Circular Interpolation is possible.
- Part Programming with ISO standard codes.
- Easy maintenance possible with easily replaceable spare card.

User friendly & Detail Operation and

- Various Canned cycles are provided.
- Automatically detects Wrong Step in programming.
- Safety Functions with Emergency Stop, overtravel limits.
- Powerful Graphics.



- OUTPUT OF SIEMENS CONTROLLER

SOFTWARE & CONTROLLER

SUPPORT CONTROLLER FILES

- Fanuc
- Siemens
- Heidenhain
- ISO-Gcodes

SOFTWARE FEATURES

- Rapid Collision Detection
- Online 3D Facility
- Dynamic Zoom / Pan / Rotation
- Measurement Facility
- Trace Forward / Backward
- Cross Section Display
- Display Toolpath & printout Facility
- Machine Time measurement

- Various Other Models are Available on Request

- Display of feed rate, spindle speed in execution & simulation mode.
 - Visvign principle "What You Will See On Graphic That You Will Get Executed On Machine".
 - Off Line Help Facility is provided.
- Controller and drives have passed through IS9001 Testing.



ATC Arrangement with Hyd.



HYTECH EDU. EQUIP. PVT. LTD.

Regd. Off. : 202 A, Umashankar, Paud Road, Pune 411 038 (INDIA).

Phone : +91-020-25465248, 24390696 Fax : +91-020-25465248 Cell 9822064599

E-mail : dunakhe@pn3.vsnl.net.in Web Site : www.hytechworld.com

Factory : Lagadmala, Laygude Industrial Estate, Dhairy, Sinhagad Road, Pune 411 041 (INDIA).