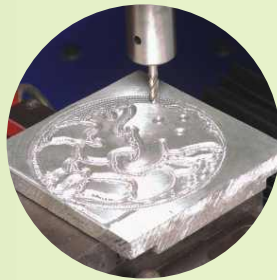




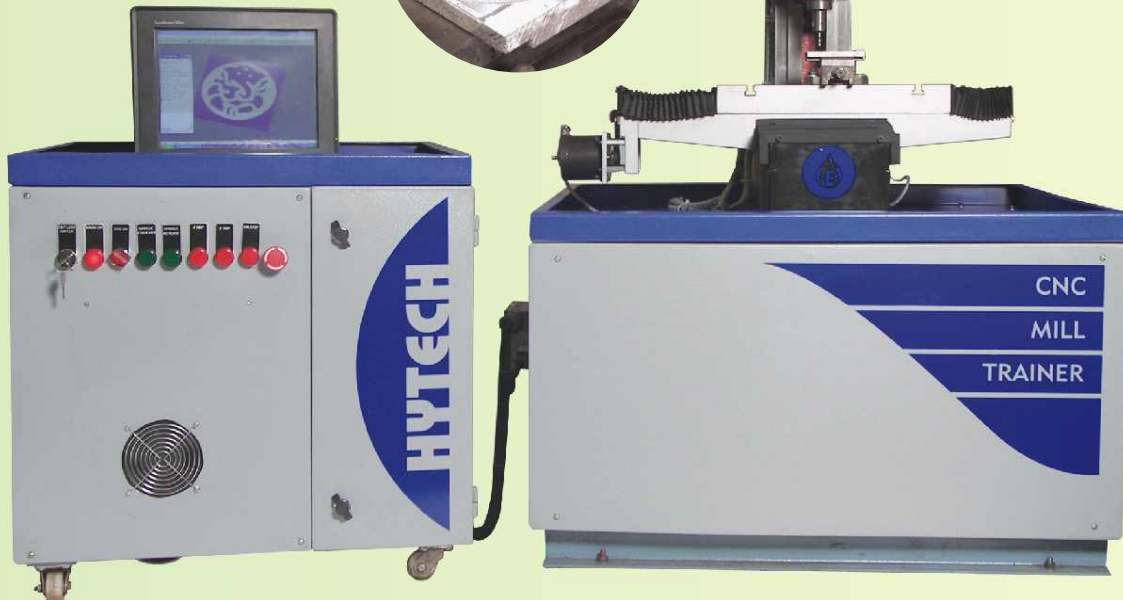
**HYTECH EDUCATIONAL EQUIPMENTS PVT. LTD.**

**CNC MILL TRAINER MODEL : CNC-NANO MILL**

- Tie up with "Cutviewer"- Tudor, UK
- 22 Countries - satisfied with "Cutviewer"
- Online Window based 3D Software



- Detail Manual with Question Bank
- Trained student works on industrial M/c same day
- Fanuc Control Codes



#### **AXES TRAVEL**

- Longitudinal traverse : 175 mm
- Cross traverse : 125 mm
- Vertical traverse : 125 mm

#### **CONTROLLER**

- Type of Control System : PC based system.
- Main Spindle Drive : D.C. Thyristor Drive, Inbuilt Safety.
- X ,Y and Z axis drive : Stepper Motor Drive Servo Drive Optional
- Input to Stepper Motor Drive : Optically Isolated, TTL compatible.
- Run speed control : Computer Control with Software.
- Interpolation : Linear, Circular, Parabolic interpolation.
- Code Used : G,M,S,T, F, I,J, K, M, F
- Cycles : Circular Interpolation, Mirror, Pocket Milling Cycle.
- Pocket & Helical Milling : Provided
- Real Time Tool Path : Provided simulation

#### **SPINDLE**

- Spindle Speed : Continuous Variable Speed
- Spindle Power : 1 HP
- Inside Taper : ISO 30
- Speed Range : 100 to 3000 rpm

#### **TABLE**

- Length X Width : 450 X 175 mm
- Clamping Area : 350 X 130 (approx.)
- T Slots : 10 mm slot width

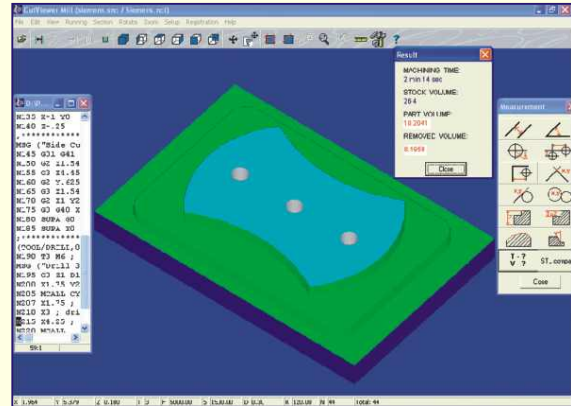
#### **MACHINE PARAMETER**

- Resolution : 10 micron
- Distance From Spindle : 25 - 225 mm (Nose to Table Top)
- Centerline to Column : 140 mm
- Spindle Center : 120 - 320 mm (Horizontal to Table)

**Dedicated & consolidated efforts to bring Latest Technology at unbeatable price**

## SALIENT FEATURE OF CUT-MILL-250 CNC MILL TRAINER

- Sturdy & Rigid Mechanical Design with Finite Element Analysis.
- Precision Ground Lead Screw
- Variable Speed DC drive for spindle
- Constant surface cutting speed is possible.
- Geometrical tolerances are maintained as per IS 6040-1993 Standard.
- Wear resistant **Turcite Material** is provided on beds.
- Manual Lubrication system
- Scaling, Circular Interpolation is possible.
- Part Programming with ISO standard codes.
- Easy maintenance possible with easily replaceable spare card.
- User friendly & Detail Operation and Maintenance Manual.
- Various Canned cycles are provided.
- Manual Coolant
- Safety Functions with Emergency Stop
- Powerful Graphics.
- Manual Quick Change Tool holder with Collet



Output of Controller

## SOFTWARE & CONTROLLER

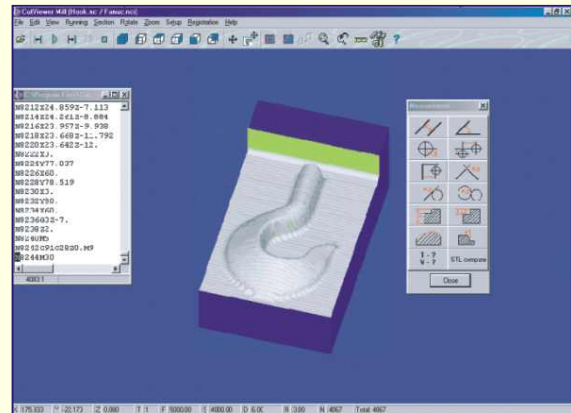
### SUPPORT CONTROLLER FILES

- Fanuc
- Siemens

### SOFTWARE FEATURES

- Rapid Collision Detection
- Online 3D Facility
- Dynamic Zoom / Pan / Rotation
- Measurement Facility
- Trace Forward / Backward
- Cross Section Display
- Display Toolpath & printout Facility
- Machine Time measurement
- Display of feed rate, spindle speed in execution & simulation mode.

- Visvign principle "What You Will See On Graphic That You Will Get Executed On Machine".
- Off Line Help Facility is provided.
- Controller and drives have passed through IS9001 Testing.



■ Various Other Models are Available on Request ■



## HYTECH EDUCATIONAL EQUIPMENTS PVT. LTD.

Regd. Off. : 202A, Umashankar, Paud Road, Pune 411 038 (INDIA).

Phone : +91-020-25465248, 24390696, 24391366 Fax : +91-020-25465248 Cell : 9822064599

E-mail : infohytech@gmail.com / dunakhe@pn3.vsnl.net.in Web Site : www.hytechworld.com

Factory : Lagadmala, Laygude Industrial Estate, Dhairy, Sinhagad Road, Pune 411 041 (INDIA).