



HYTECH EDUCATIONAL EQUIPMENTS PVT. LTD.

CNC LATHE TRAINER MODEL : CUT-TURN-100

CAD TO CAM SOLUTION THROUGH ONE WINDOW

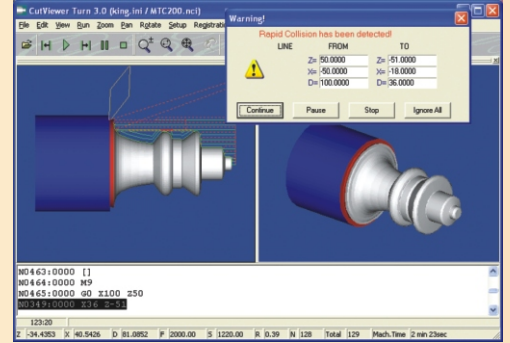
Drawing in BOBCAD-CAM V21
(Your Solidedge, CATIA, Edgcam,
Pro-E software file can be imported)

Generate NC Code
in BOBCAD

Simulation & Production on
Hytech Trainer with
Cutviewer, UK

- Tie up with "Cutviewer"- Tudor, UK for CAM & trainer manufacturing
- Integrated BOBCAD-CAM software for trainer
- 22 Countries - satisfied With "Cutviewer"
- Online Window based 3D Software
- Detail Manual with Question Bank
- Trained student works on industrial M/c same day
- Siemens, Fanuc, ISO Control Codes
- Two Years Guarantee
- Unlimited Training up to Customer Satisfaction

Integration
to FMS
possible



SPINDLE

- Spindle Speed : Continuous Variable Speed
- Spindle Power : 2 HP
- Inside Taper : MT 3
- Speed Range : 50 to 3000 rpm

MACHINE DETAILS

- Center Height : 100 mm
- Swing Over Carriage : 80 mm
- Distance Between Center : 325 mm
- Longitudinal Travel : 350 mm
- Weight : 400 Kg
- Height : 1400 mm
- Rapid Travel : 500 mm/min
- Resolution X & Z Axis : 5 micron (Std)
2.5/1.25 /1 micron on request
- Automatic Lubrication : Provided

CONTROLLER

- Type of Control System : Under technical guidance from Tudor, UK
- Main Spindle Drive : D.C. Thyristor Drive, Built Safety
- Z and X axis drive : Stepper Motor Drive with Ramp Function
- Input to Stepper Motor Drive : Optically Isolated, TTL compatible
- Run speed control : Computer Control with Software
- Interpolation : Linear, Circular interpolation
- Code Used : G, M, S, T, F, I, K, M, F
- Cycles : Circular Interpolation, Canned Cycle
- Threading : Straight / Taper
- Power Devices : Short Circuit & Over Temp. Protected
- Real Time Tool Path : With online 3D

SOME OF OUR PRESTIGIOUS CLIENTS

- West Bengal University, Kolkata.
- Ministry of Defence, Muradnagar.
- Leehung Inc. Singapore
- Punjabi University, Patiala
- National Institute of Design, Ahmedabad.
- Indian Institute of Technology, Gohatti.
- Government Polytechnic, Morbi, Gujarath.
- Government College of Engineering, Shrinagar.
- Calicut University, Calicut.
- Engineering College, Ajmer

Dedicated & consolidated efforts to bring Latest Technology at unbeatable price

SALIENT FEATURE OF CNC LATHE TRAINER

- Sturdy & Rigid Mechanical Design with Finite Element Analysis.
- Imported Ground Precision **Ball Screw**
- Variable Speed DC drive for spindle
- Eight station Indexing Turret (optional).
- Constant surface cutting speed is possible.
- Lathe's Geometrical tolerances are maintained as per IS 6040-1993 Standard.
- Wear resistant **Turcite Material** is provided on beds.
- Automatic Lubrication system (optional).
- Parabola, Circular Interpolation is possible.
- Part Programming with ISO standard codes.
- Easy maintenance possible with easily replaceable spare card.
- User friendly & Detail Operation and Maintenance Manual.
- Various Canned cycles are provided.
- Automatically detects Wrong Step in programming.
- Safety Functions with Emergency Stop, overtravel limits.
- Powerful Graphics.



SOFTWARE & CONTROLLER

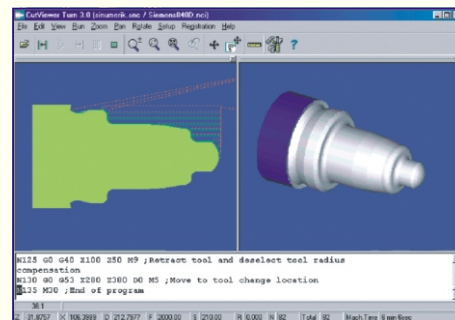
SUPPORT CONTROLLER FILES

- Fanuc 0T
- Fanuc 10T -11T
- Siemens 840D
- Traub
- ISO -Codes

SOFTWARE FEATURES

- Rapid Collision Detection
- Online 3D Facility
- Dynamic Zoom / Pan / Rotation
- Measurement Facility
- Trace Forward / Backward
- Cross Section Display
- Display Toolpath & printout Facility
- Machine Time measurement
- Volumetric Measurement.

- Display of feed rate, spindle speed in execution & simulation mode.
- Visig principle "What You Will See On Graphic That You Will Get Executed On Machine".
- Off Line Help Facility is provided.
- Controller and drives have passed through IS9001 Testing.



Output of Siemens Controller

■ Various Other Models are Available on Request ■



HYTECH EDUCATIONAL EQUIPMENTS PVT. LTD.

Regd. Off. : 202A, Umashankar, Paud Road, Pune 411 038 (INDIA).

Phone : +91-020-25465248, 24390696, 24391366 Fax : +91-020-25465248 Cell : 9822064599

E-mail : infohytech@gmail.com / dunakhe@pn3.vsnl.net.in Web Site : www.hytechworld.com

Factory : Lagadmala, Laygude Industrial Estate, Dhairy, Sinhagad Road, Pune 411 041 (INDIA).